



## **Executive Summary**

### **Pudupalayam Limekankar & Limestone Quarry – 23.35.0 Ha**

For

### **PUBLIC HEARING**

At

**S.F. No. 222/1, 222/2A, 222/11A, 225, 226/1A, 226/7,  
227/1, 233/1, 236/1A, 236/9 & 239 - 23.35.0 Ha ,  
Pudupalayam Village, Ariyalur Taluk, Ariyalur District,  
Tamil Nadu**

### **Project Proponent**

**M/s. TamilNadu Cement Corporation Limited  
(A Government of TamilNadu Undertaking)  
5th Floor, Aavin Illam, No.3A, Pasumpon Muthuramalingam  
Salai, Nandanam,  
Chennai-600035**

**EIA Notification 2006 Schedule 1(a) Category B1 (Cluster)**

**Prepared By:  
Ecotech Labs Pvt. Ltd.**



**NABET Accredited EIA Consultant  
No.48, 2<sup>nd</sup> Main road,  
Ram nagar south extention,  
Pallikaranai, Chennai-600100**



<b>Project</b>	<b><i>Pudupalayam Limekankar &amp; Limestone Quarry – 23.35.0 Ha</i></b>	<b><i>Executive Summary</i></b>
<b>Project Proponent</b>	<b><i>M/s. TamilNadu Cement Corporation Limited (A Government of TamilNadu Undertaking)</i></b>	
<b>Project Location</b>	<b><i>Pudupalayam Village, Ariyalur Taluk, Ariyalur District</i></b>	

## **EXECUTIVE SUMMARY**

The Limekankar & Limestone Quarry project of M/s. Tamilnadu Cements Corporation Limited is situated at 222/1, 222/2A, 222/11A, 225, 226/1A, 226/7, 227/1, 233/1, 236/1A, 236/9 & 239, at Pudupalayam Village, Ariyalur Taluk, Ariyalur District, Tamil Nadu of area is 23.35.0 Ha. The proposed project has been accorded with Terms of Reference from SEIAA, Tamil nadu vide Letter No. SEIAA – TN/F.No.7605/SEAC/ToR-795/2020 dated 21.10.2020. The project proponent possesses working lease for mine lease area 23.35.0 Ha for the period of 30 years from the District Collector, Industries (MMA.2) Department, Chennai.

The mining plan approval letter issued by Indian Bureau of Mines, Chennai Letter No. TN/ALR/LST&KNK/MP/2062.MDS dated 09.10.2019. The copy of LOI, which enclosed in Annexure–I. The Precise Area Communication Letter No. 3392/MMA.2/2019-1, Dated: 02.08.2019 issued by Government of Tamil Nadu Industries (MMA.2) Department, Secretariat

The quarry operation is proposed to carry out with conventional open cast semi mechanized mining in Limekankar mineral one bench is proposed with 0.75m height and width with 60° slope and for Limestone mineral two benches are proposed with 6m height and 6m width and another one bench is proposed with 3m height and 3m with 60°slope. The quarry operation is proposed up to depth of 17.75m. The Mineable Reserves is about 1066316 MT of Limestone and 108704 MT of Limekankar and Proposed Year wise production is 256200 Tonnes/Annum, Limekankar – 33914 Tonnes/Annum.

The project area does not fall in Hill Area Conservation Authority region. There is no interstate boundary, CRZ zone, Western Ghats, notified Bird sanctuaries, wildlife sanctuaries as per Wild life protection Act 1972, within the radius of 15km.

**Table 1** Brief Description of the Project

<b>S. No</b>	<b>Particulars</b>	<b>Details</b>
1	Latitude	11°04' 55.55" to 11°05' 26.05"N
2	Longitude	79°08' 48.31" to 79°09' 14.11"E
3	Site Elevation above MSL	57 m above Mean Sea Level

<b>Project</b>	<b><i>Pudupalayam Limekankar &amp; Limestone Quarry – 23.35.0 Ha</i></b>	<b><i>Executive Summary</i></b>
<b>Project Proponent</b>	<b><i>M/s. TamilNadu Cement Corporation Limited (A Government of TamilNadu Undertaking)</i></b>	
<b>Project Location</b>	<b><i>Pudupalayam Village, Ariyalur Taluk, Ariyalur District</i></b>	

4	Topography	Plain Terrain
5	Land use of the site	Patta land
6	Extent of lease area	23.35.0 Ha
7	Nearest highway	NH 227 – Tiruchirapalli – Chidambaram
8	Nearest railway station	Ariyalur (10.5km, NW)
9	Nearest airport	Tiruchirapalli - 59 km, SW
10	Nearest town / city	Ariyalur (9.40 Km, NW)
11	Rivers / Canal/Lake	<ul style="list-style-type: none"> <li>❖ Eleri Village Lake (5.7 km, S)</li> <li>❖ Manakkudi Big Lake (6.32 km, N)</li> <li>❖ Sithu Lake (8.77 km, S)</li> <li>❖ Kurinji Lake (10.2 km, NW)</li> <li>❖ Periya Lake (12.95 km, NW)</li> <li>❖ Ponnangulam Lake (13.41 km, SW)</li> <li>❖ Lake Kalleri (13.63 km, NE)</li> <li>❖ New Lake (14.64 km, SW)</li> <li>❖ Lake Putheri (14.14 km, NE)</li> <li>❖ Lake Aruthaneri (14.34 km, NE)</li> <li>❖ Lake Melur (14.72 km, NE)</li> <li>❖ Maruthaiyar River (2.14 km, S)</li> </ul>
12	Reserved Forest / Wild life Sanctuary	<ul style="list-style-type: none"> <li>➤ Adichanur RF (7.18 km, E)</li> <li>➤ Ulliyankudi RF (8.54 km, E)</li> <li>➤ Sundaresapuram RF (9.01 km, E)</li> <li>➤ Alvoy RF (12.36 km, E)</li> <li>➤ Parukkal RF (14.9 km, E)</li> <li>➤ Karaivetti Bird Sanctuary (16km, SW)</li> </ul>
13	Seismic Zone	Zone – III [as per IS 1893 (Part-I): 2002]
14	Total Project Cost	Rs. 31,96,24,640

### **Need for the Project**

India is the second largest producer of cement in the world. India has a lot of potential for development in the infrastructure and construction sector and the cement sector is expected to largely benefit from it. The drive to take India's economy, with initiatives such as

<i>Project</i>	<i>Pudupalayam Limekankar &amp; Limestone Quarry – 23.35.0 Ha</i>	<i>Executive Summary</i>
<i>Project Proponent</i>	<i>M/s. TamilNadu Cement Corporation Limited (A Government of TamilNadu Undertaking)</i>	
<i>Project Location</i>	<i>Pudupalayam Village, Ariyalur Taluk, Ariyalur District</i>	

'Housing for All' and 'Smart Cities Mission' will be heavily reliant on the growth of the cement industry.

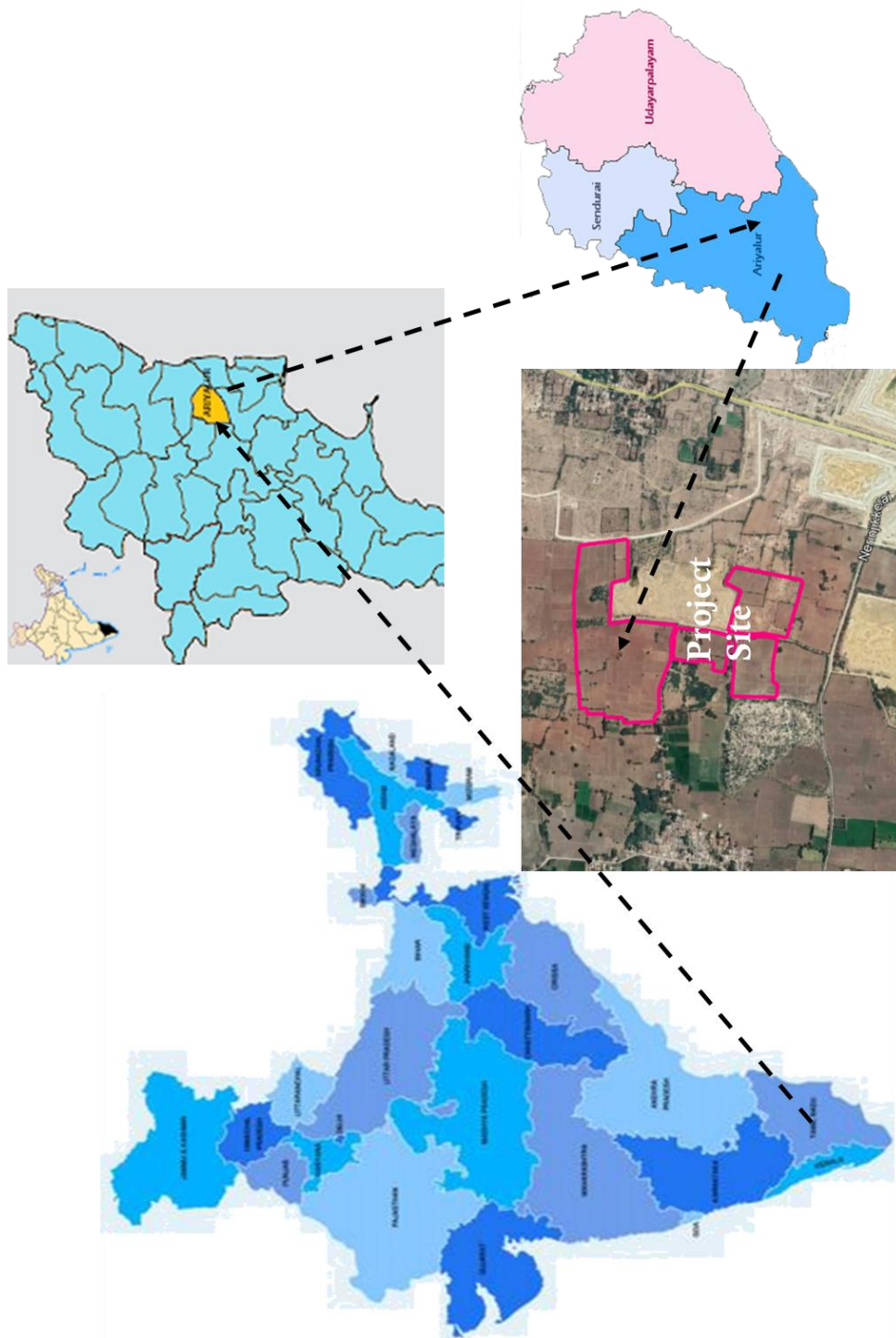
Tamilnadu Cements Corporation Limited (TANCEM), a wholly-owned Government of Tamil Nadu undertaking, started business from 1st April 1976 with an authorized share capital of Rs.18 Crores taking over cement plant at Alangulam and setting up another plant at Ariyalur in the year 1979. The Ariyalur Cement Works is primarily supplying cement to Government departments. It has a wide network of stockists for open market sales and selling cement in the central and northern districts of Tamil Nadu and Northern districts of Kerala. It manufactures OPC 43 Grade & PPC under ARASU and VALIMAI brands.

TANCEM has thus become a multi plant, multi-location, and multi-product company with an annual turnover of around Rs. 500 crores and the authorized capital as of now is Rs.112 Crores.

The main objective of the company is to produce cement and cement based products to primarily cater the needs of the Government.

The industry believes that there would be a surge in demand due to the requirements of a strong infrastructure framework that the nation endeavours to put in place through its government as well as housing projects.

<b>Project</b>	<b><i>Pudupalayam Limekankar &amp; Limestone Quarry – 23.35.0 Ha</i></b>	<b>Executive Summary</b>
<b>Project Proponent</b>	<b><i>M/s. TamilNadu Cement Corporation Limited (A Government of TamilNadu Undertaking)</i></b>	
<b>Project Location</b>	<b><i>Pudupalayam Village, Ariyalur Taluk, Ariyalur District</i></b>	



**Figure 1 Project Location**

<b>Project</b>	<b>Pudupalayam Limekankar &amp; Limestone Quarry – 23.35.0 Ha</b>	<b>Executive Summary</b>
<b>Project Proponent</b>	<b>M/s. TamilNadu Cement Corporation Limited (A Government of TamilNadu Undertaking)</b>	
<b>Project Location</b>	<b>Pudupalayam Village, Ariyalur Taluk, Ariyalur District</b>	



**Figure 2 Google Image of the Project Site**

**Geological Reserves & Mineable Reserves**

**Table 2 Geological & Mineable Reserves - Summary**

<b>Description</b>	<b>Section</b>	<b>Limestone ROM (Ts)</b>	<b>Limestone @100% Recovery (Ts)</b>	<b>Limekankar ROM (Ts)</b>	<b>Limekankar @100% Recovery (Ts)</b>	<b>Topsoil (Ts)</b>
Mineral Reserve	X3 Y3-AB	41080	41080	8319	8319	23296
	X5Y5-CD	5580	5580	1249	1249	4752
	X6Y6-IJ	225252	225252	19217	19217	51408
	X7Y7-KL	49280	49280	9315	9315	25232
	X8Y8-KL	65400	65400	12120	12120	31944
	X9Y9-OP	650748	650748	54008	54008	137472
	X10Y10-MN	28976	28976	4475	4475	12528
	<b>Total</b>	<b>1066316</b>	<b>1066316</b>	<b>108704</b>	<b>108704</b>	<b>286632</b>

<i>Project</i>	<i>Pudupalayam Limekankar &amp; Limestone Quarry – 23.35.0 Ha</i>	<i>Executive Summary</i>
<i>Project Proponent</i>	<i>M/s. TamilNadu Cement Corporation Limited (A Government of TamilNadu Undertaking)</i>	
<i>Project Location</i>	<i>Pudupalayam Village, Ariyalur Taluk, Ariyalur District</i>	

**Table 3** Summary of Year wise production

Year	Limestone		Limekankar		Topsoil (Ts)	Ore to Overburden Ratio
	Limestone ROM (Ts)	Limestone @ 100% Recovery (Ts)	Limekankar ROM (Ts)	Limekankar @ 100% Recovery (Ts)		
I year	100256	100256	16338	16338	46320	1:0.46
II Year	256200	256200	17483	17483	43008	1:0.16
III Year	237336	237336	18107	18107	44544	1:0.18
IV Year	235652	235652	33914	33914	90776	1:0.38
V Year	195792	195792	14543	14543	38688	1:0.26
<b>Total</b>	<b>1025236</b>	<b>1025236</b>	<b>100384</b>	<b>100384</b>	<b>263336</b>	<b>1:0.26</b>

### Topography:

The core zone i.e. the area applied for mining lease is of sedimentary terrain. The topography of the area is almost plain topography with gentle gradient towards south. The lease area will be altered due to mining activities by formation of benches towards the inner faces and proposed mine pit is well above the ground water table levels. Thus, the mining will bring change in the local topography of the lease applied area.

### Opencast Mines - Salient Features of Mode of working-:

The mining operations are proposed to be carried out by “B Category” Method. Excavators will be deployed for the formation of benches and loading. Rock breaker is proposed for development & production activities. Neither drilling nor blasting is carried out.

One bench is proposed on the topsoil with 2.0m height and width with 45° slope. In Limekankar mineral one bench is proposed with 0.75m height and width with 60° slope. In



<b>Project</b>	<b><i>Pudupalayam Limekankar &amp; Limestone Quarry – 23.35.0 Ha</i></b>	<b><i>Executive Summary</i></b>
<b>Project Proponent</b>	<b><i>M/s. TamilNadu Cement Corporation Limited (A Government of TamilNadu Undertaking)</i></b>	
<b>Project Location</b>	<b><i>Pudupalayam Village, Ariyalur Taluk, Ariyalur District</i></b>	

Limestone mineral two benches are proposed with 6m height and 6m width and another one bench is proposed with 3m height and 3m with 60° slope.

During the mining plan period, the mining operations are proposed to be carried out in the North, Centre, Eastern & western portion of the area applied for Mining lease starting from West and progress towards the Eastern side by open cast method with Two benches is 6m bench height and 6m bench width and another one bench is 3m bench height and 3m bench width for a limestone mineral upto a depth of 17.75mts with an average of 0.75m limekankar and 2.0m Topsoil from RL 55.0m to RL 37.25m.

The proposed average annual production Limestone will be **256200 Tonnes** and Limekankar will be **33914 Tonnes** with 300 working days in a year. The generation of topsoil during the present plan period will be temporarily dumped on the Northwestern portion of the area and also utilized for Afforestation purposes.

### **Top Soil**

The topsoil is black cotton soil. It occurs to a depth of 2m and lies over the Limekankar formations. About 263336 Ts of topsoil would be generated during the present plan period is proposed to be dumped on the Northwestern portion of the lease applied area and also utilized for afforestation purposes. Topsoil & Limekankar is the overburden found in the area applied for Mine lease.

There is no Mineral reject, the entire lease area consists of whole area deposit. Hence quantities of generation of mineral rejects in this area applied for mining lease does not arise. The generation of topsoil during the present plan period will be temporarily dumped on the Northwestern portion of the area and also utilized for Afforestation purposes.

**Table 4 Dimensions of the dumps at the end of the life of mine**

Existing Dump 1 (from Adjacent Mine Lease Area)	65m x 80m x 6m (h)	North
Proposed Topsoil Temporary Dump	60m x 76.3m x 31.3m (h)	North west
Proposed Bund	163m x 15m x 9.7m (h)	North west

<b>Project</b>	<b><i>Pudupalayam Limekankar &amp; Limestone Quarry – 23.35.0 Ha</i></b>	<b><i>Executive Summary</i></b>
<b>Project Proponent</b>	<b><i>M/s. TamilNadu Cement Corporation Limited (A Government of TamilNadu Undertaking)</i></b>	
<b>Project Location</b>	<b><i>Pudupalayam Village, Ariyalur Taluk, Ariyalur District</i></b>	

## Water Requirement

**Table 5 Water requirement Summary**

<b>Purpose</b>	<b>Quantity</b>	<b>Sources</b>
Drinking Water	0.65 kLD	Water will be supplied from existing mine of TANCEM which is covered in Mining Lease G.O. No. 344 and from nearby vendors.
Green belt	11.0 kLD	
Dust suppression	11.0 kLD	
<b>Total</b>	<b>22.65 kLD</b>	

## Land Use Pattern Details

The details of land area indicating the area likely to be degraded due to mining will be as under: -

**Table 6 Land use Breakup**

<b>S. No</b>	<b>Land Use</b>	<b>Mine lease Area (Ha)</b>
1	Mining	04.02.7
2	Dump	04.19.4
3	Office & Infrastructure	00.05.0
4	Mine Roads	00.50.0
5	Greenbelt	04.41.5
6	Un utilized area	10.16.4
	<b>Total</b>	<b>23.35.0</b>

## Manpower:

The total number of employees including skilled and un-skilled workers is 13 which include workers for mine and ancillary unit. The details of the staff and workmen employed in the mine are given below:-

<b>Project</b>	<b><i>Pudupalayam Limekankar &amp; Limestone Quarry – 23.35.0 Ha</i></b>	<b><i>Executive Summary</i></b>
<b>Project Proponent</b>	<b><i>M/s. TamilNadu Cement Corporation Limited (A Government of TamilNadu Undertaking)</i></b>	
<b>Project Location</b>	<b><i>Pudupalayam Village, Ariyalur Taluk, Ariyalur District</i></b>	

**Table 7 Manpower Requirement**

<b>S. No.</b>	<b>Designation</b>	<b>Nos.</b>
1.	Mines Manager	1
2.	Mines Engineer	1
3.	Geologist	1
4.	Mine Foreman	1
5.	Mines Office clerk (full time)	1
6.	Skilled Labour (Mate/Supervisor)	1
7.	Semi Skilled (Drivers & Operators)	5
8.	Unskilled Labours	2
	Total	13

**Machinery and Equipment**

**Table 8 machinery & Equipment Details**

<b>S.No.</b>	<b>Machinery</b>	<b>Capacity</b>	<b>Numbers</b>
1.	Hydraulic Excavator attached with rock breaker	0.6 m <sup>3</sup>	2
2.	Tipper	20 T	6

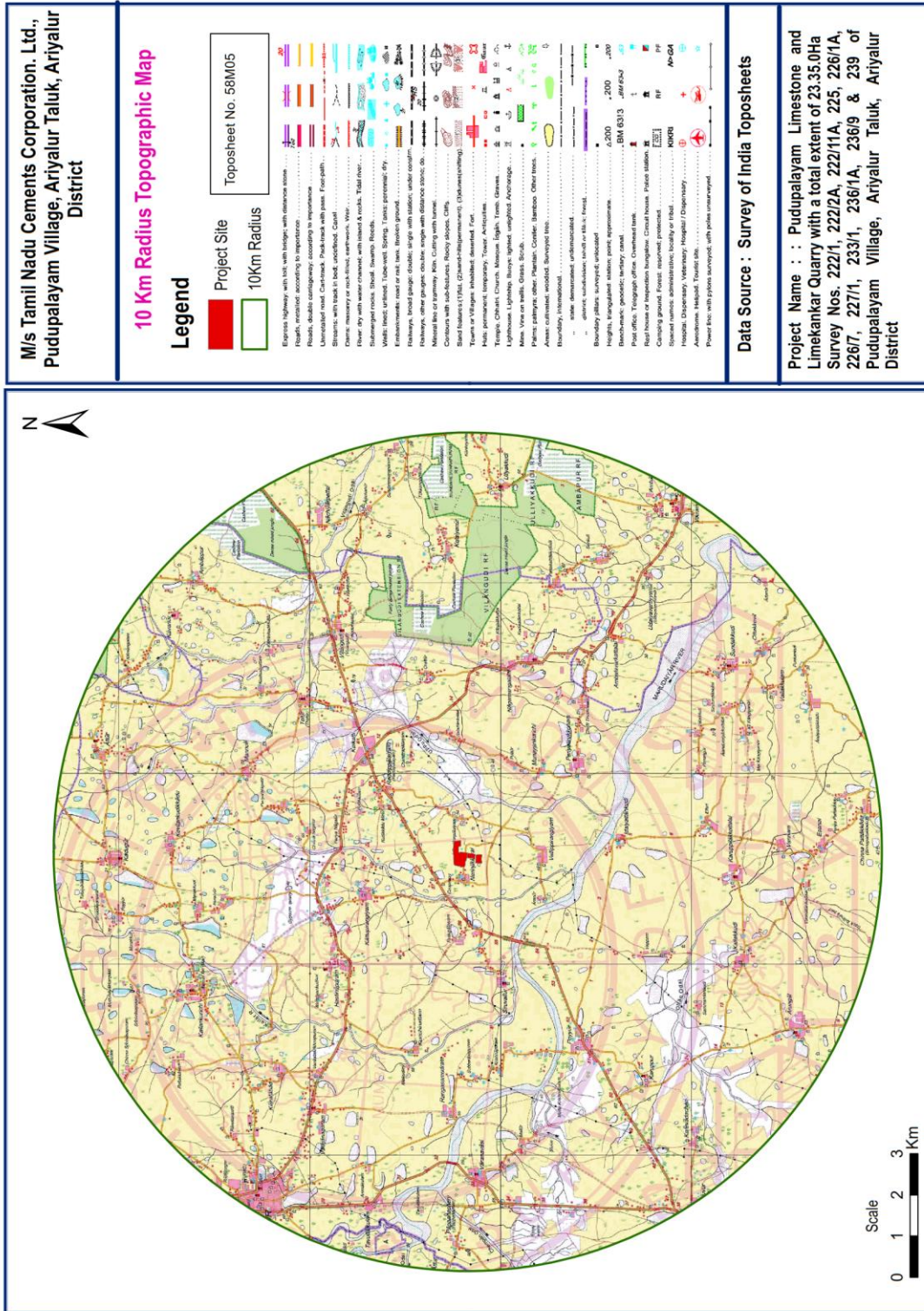
**Scope of the Baseline Study**

The chapter contains information on existing environmental scenario on the following parameters.

1. Micro – Meteorology
2. Water Environment
3. Air Environment
4. Noise Environment
5. Soil/ Land Environment
6. Biological Environment
7. Socio-economic Environment



<b>Project</b>	<b>Pudupalayam Limekankar &amp; Limestone Quarry – 23.35.0 Ha</b>	<b>Executive Summary</b>
<b>Project Proponent</b>	<b>M/s. TamilNadu Cement Corporation Limited (A Government of TamilNadu Undertaking)</b>	
<b>Project Location</b>	<b>Pudupalayam Village, Ariyalur Taluk, Ariyalur District</b>	



**Figure 4 10km Radius Topo Map**

<b>Project</b>	<b><i>Pudupalayam Limekankar &amp; Limestone Quarry – 23.35.0 Ha</i></b>	<b><i>Executive Summary</i></b>
<b>Project Proponent</b>	<b><i>M/s. TamilNadu Cement Corporation Limited (A Government of TamilNadu Undertaking)</i></b>	
<b>Project Location</b>	<b><i>Pudupalayam Village, Ariyalur Taluk, Ariyalur District</i></b>	

## **Micro – Meteorology**

The area exhibits a subtropical climate and the temperature that goes upto 42°C in summer and falls down to 27°C in December – January. The wind direction is NE-SW and vice-versa. Average annual rainfall is about 1071.4 mm in monsoon season.

## **Air Environment**

Ambient air monitoring was carried out on monthly basis in the surrounding areas of the Mine Lease area to assess the ambient air quality at the source. To know the ambient air quality at a larger distance i.e. in the study area of 5km radius, air quality survey has been conducted at 5 locations over a period of July – September 2020. Major air pollutants like, Particulate Matter (PM<sub>10</sub>), Sulphur Dioxide (SO<sub>2</sub>), Nitrogen Dioxide (NO<sub>2</sub>) were monitored and the results are summarized below,

The baseline levels of PM<sub>10</sub> (33- 58 µg/m<sup>3</sup>), PM<sub>2.5</sub> ( 14-29 µg/m<sup>3</sup>), SO<sub>2</sub> (5-17 µg/m<sup>3</sup>), NO<sub>2</sub> ( 10-36 µg/m<sup>3</sup>), all the parameters are well within the standards prescribed by National Ambient Air Quality during the study period from July – September 2020.

## **Noise Environment**

Ambient noise levels were measured at 5 locations around the proposed project site. Noise level varies from 43.0 to 49 dB(A) during day time and 38-44 dB(A) during night time. Maximum noise level were recorded at Pudupalayam (49 dBA) during day time.

## **Water Environment**

During the study period 2 surface water samples collected from near the site i.e, at Marudhaiyar River and Eleri Lake and Ground water samples were collected from 5 locations. The values of Ground water samples lies in the range of

- The pH is from 6.94 – 7.75.
- TDS value is from 402 - 862 mg/L
- Chloride ranges from 49 -160 mg/L
- Total Hardness ranges from 230- 400 mg/L

## **Land Environment**

- pH is 7.23 which indicates soil is slightly alkaline.
  - EC of soil is 0.875 µS/cm
- Organic matter in soil is 0.07%, which indicates the soil is unfertile.

<b>Project</b>	<b><i>Pudupalayam Limekankar &amp; Limestone Quarry – 23.35.0 Ha</i></b>	<b><i>Executive Summary</i></b>
<b>Project Proponent</b>	<b><i>M/s. TamilNadu Cement Corporation Limited (A Government of TamilNadu Undertaking)</i></b>	
<b>Project Location</b>	<b><i>Pudupalayam Village, Ariyalur Taluk, Ariyalur District</i></b>	

### **Biological Environment**

The Mining lease area is plain terrain and species observed in the study area, there is no extinct flora and fauna species found in the study area.

### **Socio Economic Environment**

Ariyalur is a town and district headquarters of Ariyalur district in the South Indian state of Tamil Nadu and rich limestone and surrounded with seven cement factories and two sugar factories. The town is located at a distance of 310 km from the state capital Chennai. The Nediyruppu village has population of 136519 of which 68538 are males while 67981 are females as per Population Census 2011. It covers an area of 326.82 Sqkm. In 2011, literacy rate of Ariyalur village was 49365 Males and 37206 females.

### **Rehabilitation/ Resettlement**

- The overall land of the mine is patta land. There are no displacement of the population within the project area and adjacent nearby area. Social development of nearby villages will be considered in this project.
- The mine area does not cover any habitation. Hence the mining activity does not involve any displacement of human settlement.

### **Greenbelt Development**

- The development of greenbelt will be done in the peripheral buffer zone of the mine area.
- Green belt has been recommended as one of the major component of environmental Management plan, which will improve ecology, environment and quality of the surrounding area.
- Local trees like, Elamji, Vettithali and Poovam etc will be planted along the south side lease boundary and avenues as well as over Non-active dumps at a rate of 5000 trees per annum with interval 5m .
- The rate of survival expected to be 80% in this area.

### **Green Belt Development Details**

**Table 9 Green Belt Area Details**

<b>S.No</b>	<b>Length (m)</b>	<b>Breadth (m)</b>	<b>Area (Sqm)</b>
1	111	50	5550
2	126	10	1259.9
3	256	50	11200
4	157	7.5	726

<b>Project</b>	<b><i>Pudupalayam Limekankar &amp; Limestone Quarry – 23.35.0 Ha</i></b>	<b><i>Executive Summary</i></b>
<b>Project Proponent</b>	<b><i>M/s. TamilNadu Cement Corporation Limited (A Government of TamilNadu Undertaking)</i></b>	
<b>Project Location</b>	<b><i>Pudupalayam Village, Ariyalur Taluk, Ariyalur District</i></b>	

5	202	10	2020
6	704	7.5	3967.5
7	322	7.5	1108.5
8	165	10	1646
9	565	7.5	2925
10	44	7.5	231
11	135	50	5225
12	223	7.5	1028.498
13	674	10	6738.5
14	170	7.5	525
<b>Total Green belt area</b>			<b>44150.9</b>
<b>Total Green belt area</b>			<b>4.41.5 Ha</b>

### **Anticipated Environmental Impacts**

#### **Air Environment and Mitigation Measures**

- Water sprinkling will be done on the roads & unpaved roads.
- Proper mitigation measures like water sprinkling will be adopted to control dust emissions.
- Plantation will be carried out on approach roads & nearby mine premises.
- To control the emissions regular preventive maintenance of equipments will be carried out.

#### **Noise Environment and Mitigation Measures**

- Periodical monitoring of ambient noise will be done as per CPCB guidelines.
- No other equipment except the transportation vehicles and excavator for loading will be allowed.
- Noise generated by these equipments shall be intermittent and does not cause much adverse impact

#### **Responsibilities for Environmental Management Cell (EMC)**

The responsibilities of the EMC include the following:

- Environmental Monitoring of the surrounding area
- Developing the green belt/Plantation
- Ensuring minimal use of water
- Proper implementation of pollution control measures



<b>Project</b>	<b><i>Pudupalayam Limekankar &amp; Limestone Quarry – 23.35.0 Ha</i></b>	<b><i>Executive Summary</i></b>
<b>Project Proponent</b>	<b><i>M/s. TamilNadu Cement Corporation Limited (A Government of TamilNadu Undertaking)</i></b>	
<b>Project Location</b>	<b><i>Pudupalayam Village, Ariyalur Taluk, Ariyalur District</i></b>	

### **Environmental Monitoring Program**

A monitoring schedule with respect to Ambient Air Quality, Water & Wastewater Quality, Noise Quality as per Central Pollution Control Board (CPCB), shall be maintained.

### **23. Project Cost**

The total project cost is **Rs. 319624640** including land cost and deployment of machinery and creation of infrastructural facilities like approach road, Mine office / Workers Shed, First Aid Room etc, electrifications and water supply

**Table 10 Project Cost Details**

<b>S.No</b>	<b>Description</b>	<b>Cost (Rs)</b>
1.	Land Cost	1,56,44,500
2.	Operational Cost	Limestone – Rs. 274043212 Limekankhar – Rs. 27936928
3.	EMP Cost	20,00,000
<b>Total</b>		<b>319624640</b>

### **Corporate Social Responsibility**

The funds for the following Corporate Environment Responsibility (CER) activities will be allocated before the commencement of the quarrying activities. (2% of the total project cost)

<b>S. No.</b>	<b>CER Activity</b>	<b>CER (Rs in Crores)</b>
1.	Provision of basic amenities such as Drinking water, Hygienic Toilets facilities, Furniture's and Solar Lights to Government school in Pudupalayam Village	<b>319624640</b>
<b>Total</b>		<b>6392492.8</b>